



Sendra 2009

*A brand new – state of the art – analysis tool for your SCAL project –
Relative permeability and Capillary pressure*

Sendra 2009 includes a modern user interface with an advanced plotting option. You can administrate an entire SCAL project – several cases and experiments – in one file/project.

We bridge from core to field

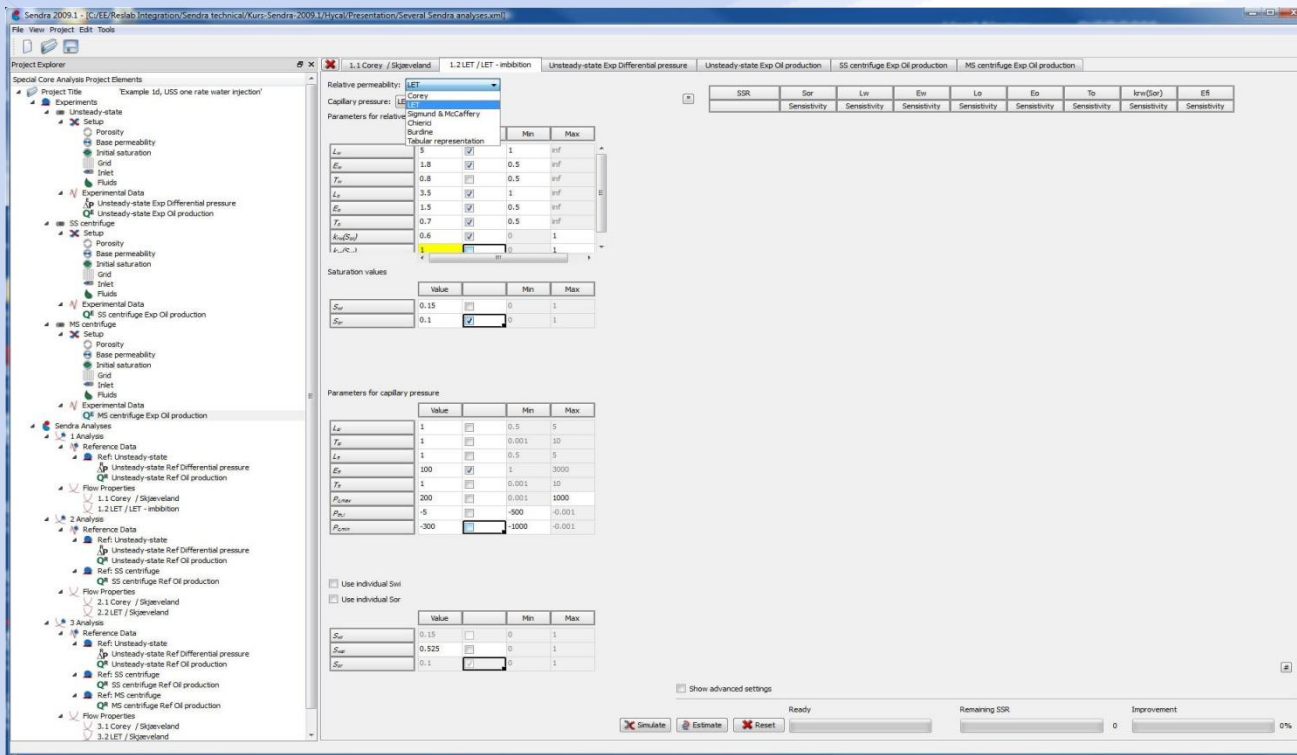
Sendra 2009 can be used for analysis and quality check individual experiments as well as analyzing all revealed relative permeabilities determined within a project – commonly a field or a well

List of features

- ✓ *Well defined data-model for your SCAL project*
- ✓ *Easy to edit and navigate*
- ✓ *Step by step wizard*
- ✓ *Include all standard Relative permeability and Capillary pressure correlations*
- ✓ *User friendly and interactive interface for Windows*
- ✓ *Advanced plotting options*
- ✓ *Comparison of flow properties for field applications*
- ✓ *All units integrated*

Sendra 2009 is based upon the commercial core flow simulator Sendra that has been in the market for more than a decade. It consists of the well tested core flow simulator and the optimization routine but is extensively extended for comparison and recommendations of flow properties for field applications





Applications

- ✓ Design of Experiments
- ✓ Quality Control of SCAL data
- ✓ Simulation of Experiments
- ✓ Determination of k_r and P_c
- ✓ Recommendations of relative permeabilities as well as capillary pressure
- ✓ Extensive study of multi-phase flow experiments for field applications.
- ✓ Based upon the existing version of Sendra, but analyze your SCAL results rather than solely single experiments
- ✓ To be used for comparison and recommendations of flow properties for field applications.
- ✓ Excellent means of quality control of the recommendations for full field simulations.
- ✓ User friendliness is maintained at a high level through a well arranged Graphical User Interface for Windows.

